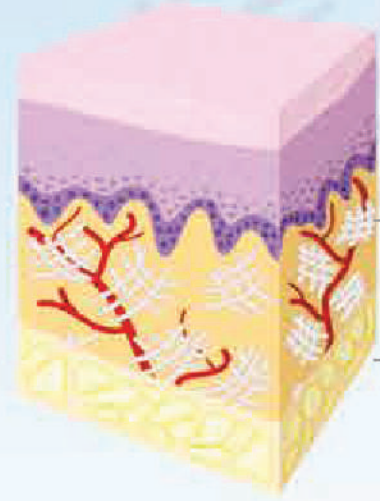




### DEEP SYNERGIC ACTION

The synergic action of laser, LED and radiofrequency, enhanced by the endodermic massage, allows to increase the production of collagen and elastin and at the same time improve microcirculation.



Collagen and elastin

Fat cells



# PURE:SKIN INTERNATIONAL

### TECHNICAL CHARACTERISTICS

Radiofrequency	multipolar
RF output frequency	455 KHz
Vacuum	pulsed/continuous
Red LED wavelength	633 nm
Laser wavelength	905 nm
Treatment area	face/body
Preset protocols	13
User-defined protocols	user memory
Outputs	2
Display	10.1" colour touch screen
Dimensions (LxWxH)	62 x 39 x 111 cm
Weight	25 kg
Power supply	230 Vac

### PROVEN EFFICIENCY

ReShape is the new combined device that offers **result driven treatments** for the face and body

- Vacuum suction
- Radiofrequency
- LED
- Softlaser

ReShape has been developed to deliver excellent results through extensive experimental work carried out by our scientific consultants, the simultaneous use of 4 technologies is the achievement of an important target to combine with great effect different aesthetic technologies in one equipment.

The device has **two probes**: one of small size, perfect for the treatment of visage, neck and décolleté and a second one with a larger diameter designed to treat cellulite, body contouring and localized swelling.



Before

After

Before

After

Before

After



[www.pureskin-international.com](http://www.pureskin-international.com)  
[info@pureskin-international.com](mailto:info@pureskin-international.com)



PURE:SKIN  
INTERNATIONAL



Very effective  
TREATMENT against  
**CELLULITE**  
grades 1-111

RF - Softlaser - LED - Vacuum

Combined action for extraordinary effects on face and body

MADE IN ITALY

